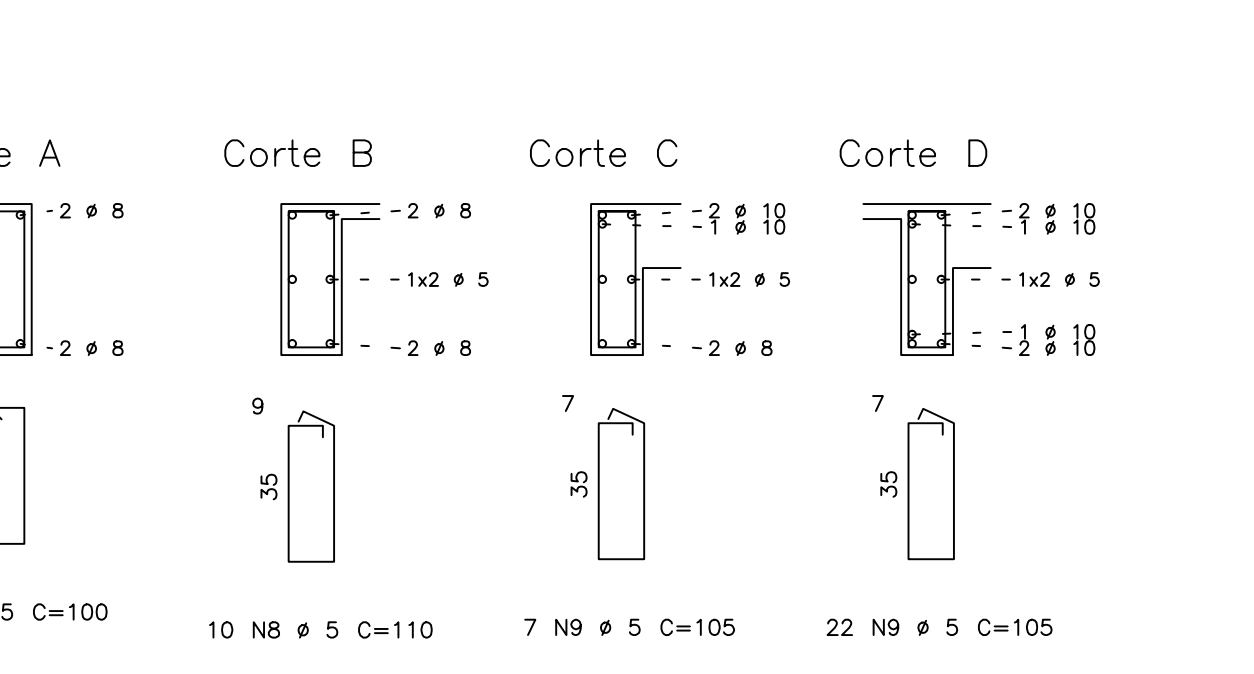
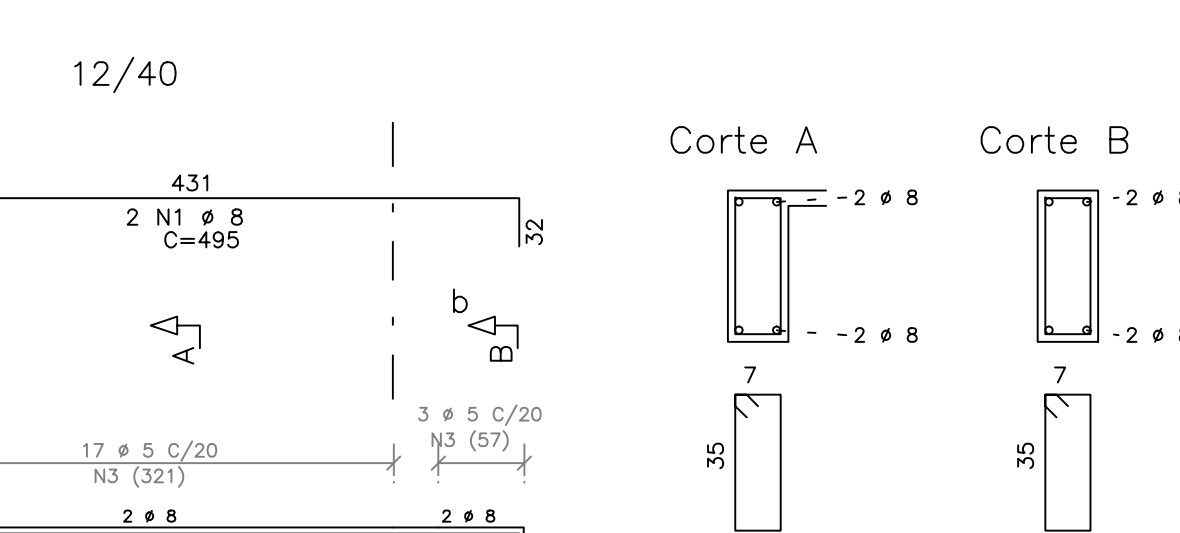
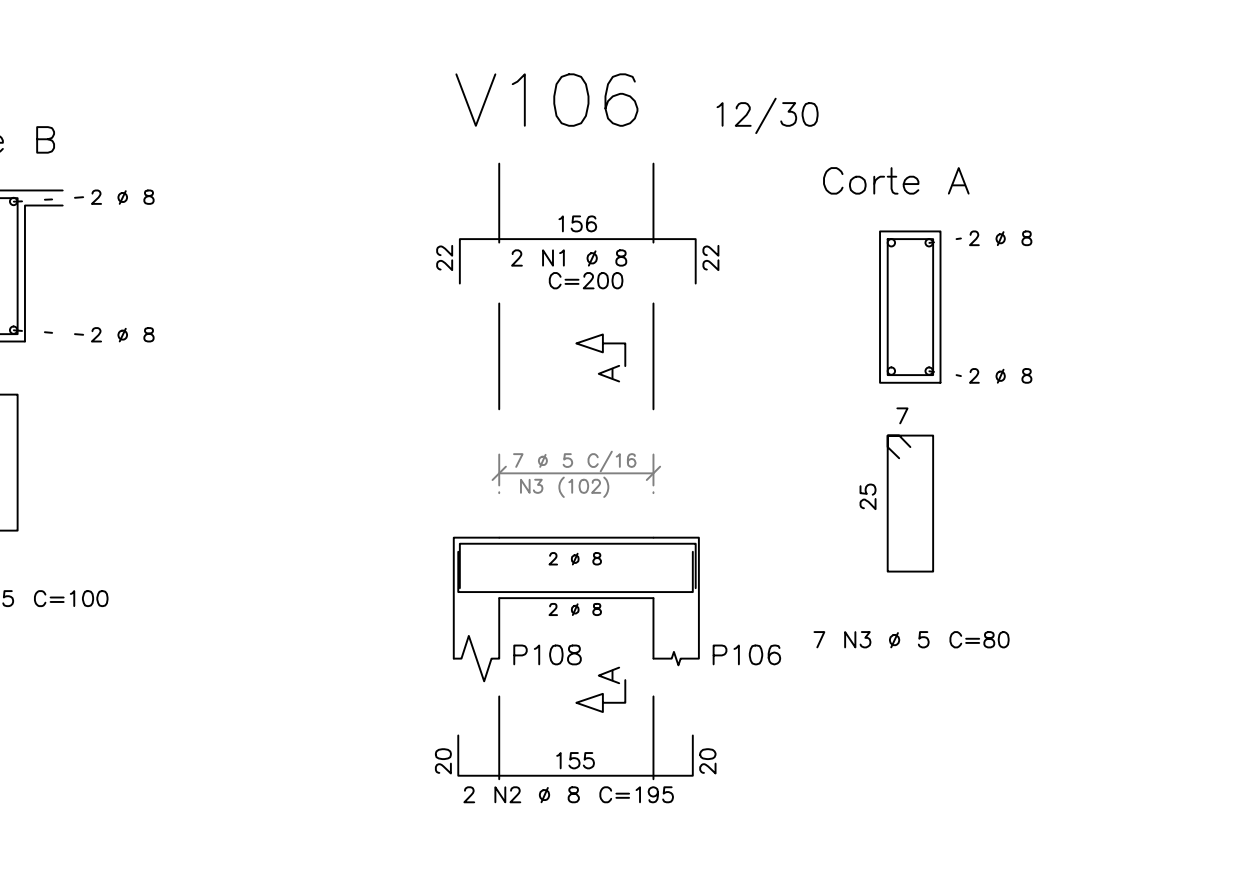
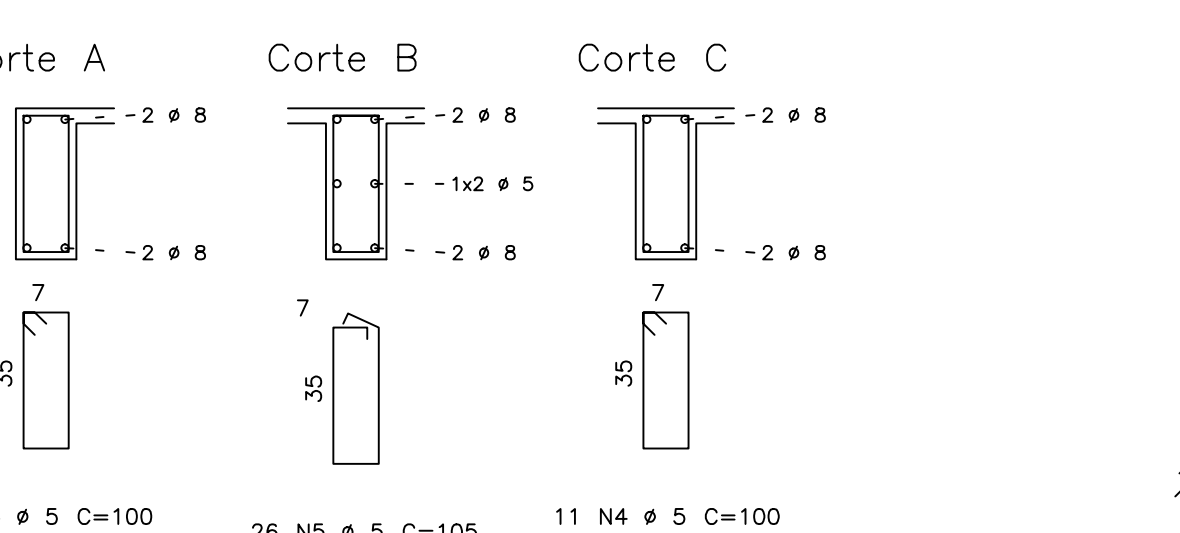
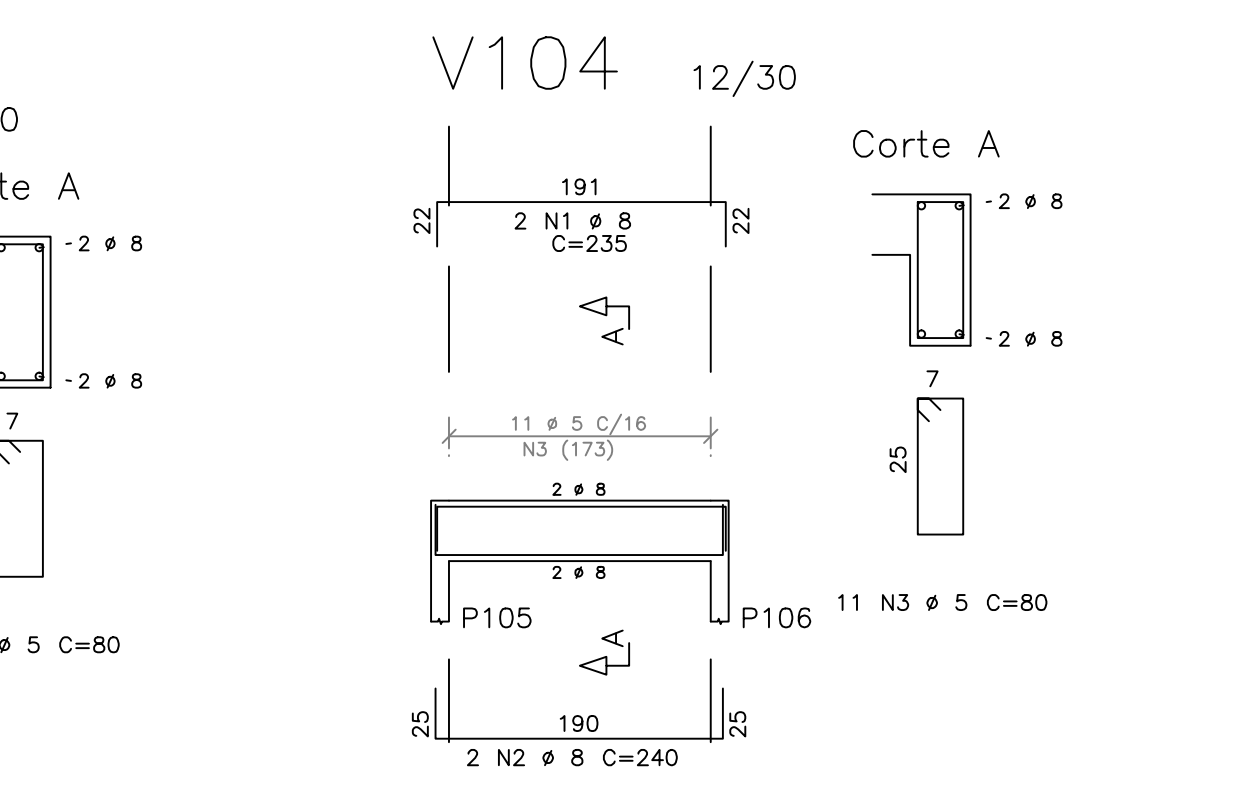
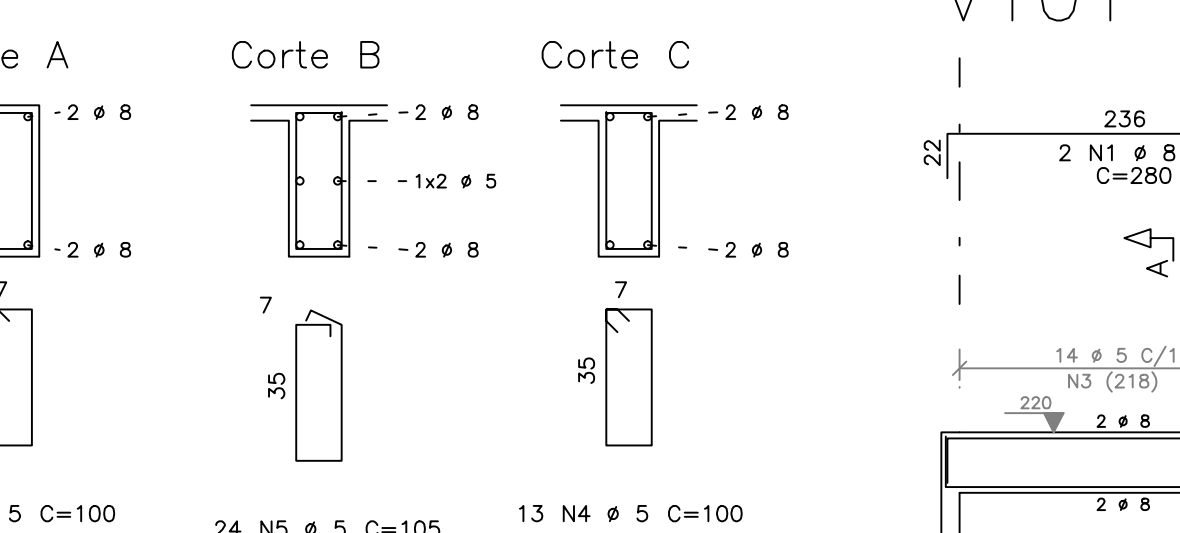
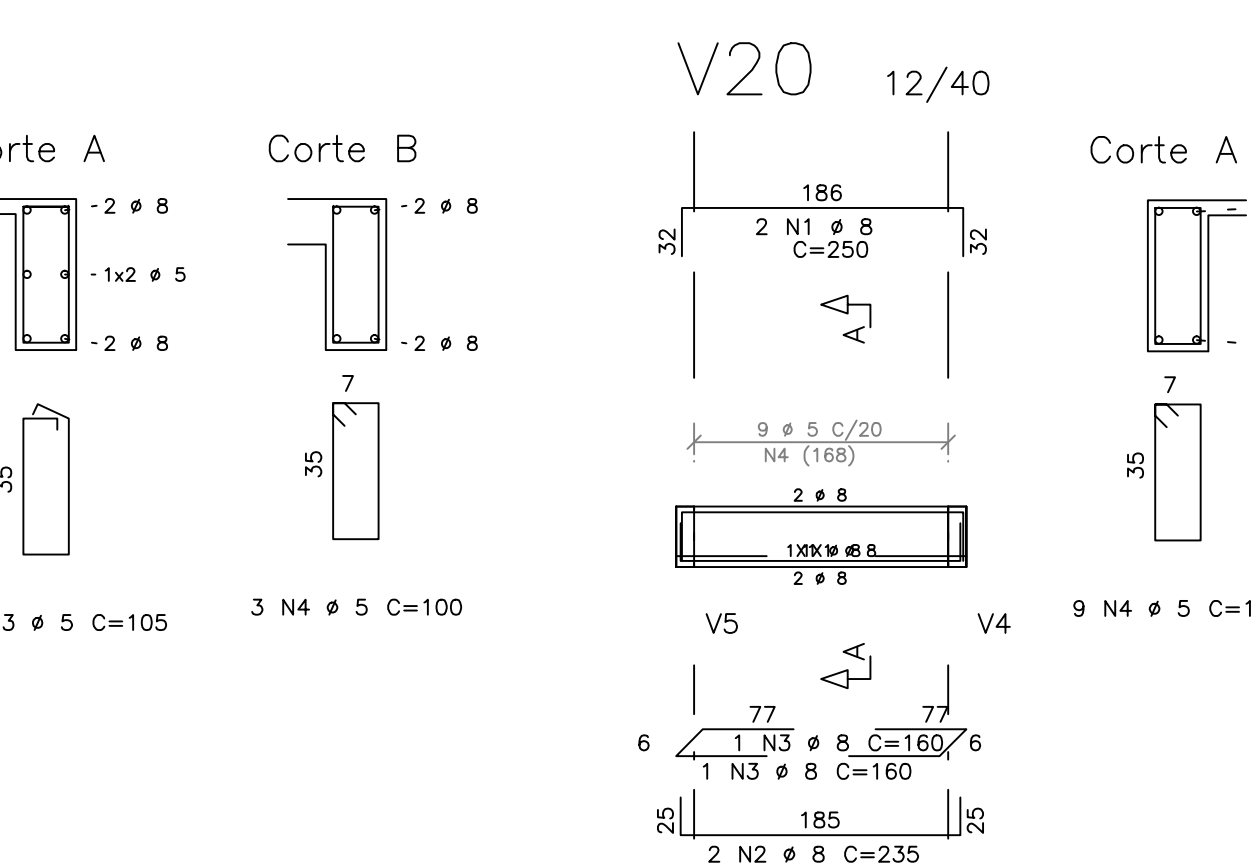
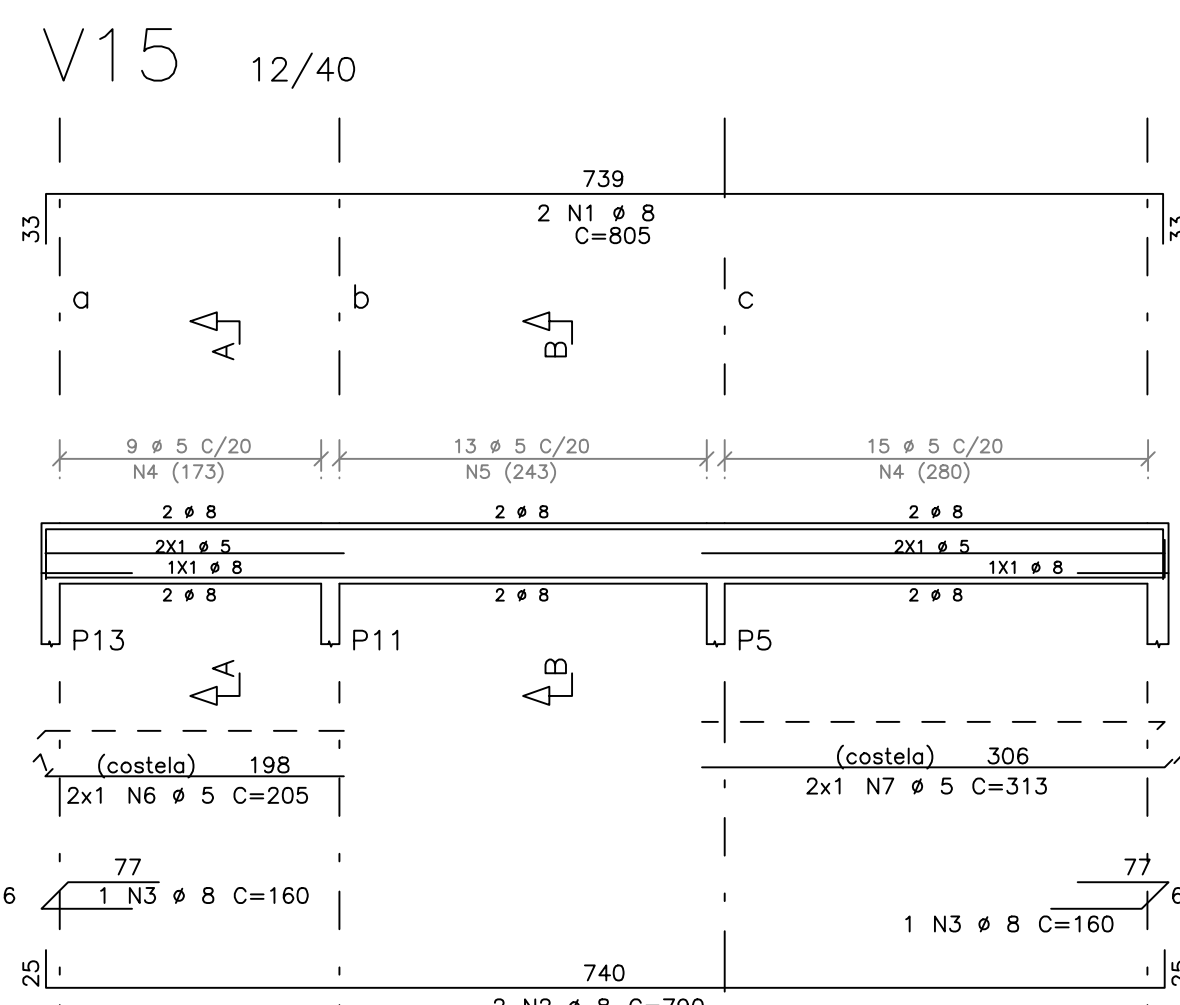


	AÇO	POS	BIT (mm)	QUANT	COMPR. (unit)
V18	50A	1	8	2	42
	50A	2	10	2	32
	50A	3	8	2	32
	50A	4	8	2	35
	50A	5	10	2	35
	60B	6	10	2	15
	60B	7	5	5	10
	60B	8	5	5	10
V19	60B	9	5	29	10
	60B	10	5	2	24
	60B	11	5	2	24
	60B	12	5	2	37
	50A	1	8	2	80
	50A	2	8	2	80
	50A	3	8	2	80
	50A	4	5	26	80
V20	50A	5	5	11	10
	50A	6	5	2	10
	60B	7	5	2	32
	60B	8	5	2	32
V21	50A	1	8	2	25
	50A	2	8	2	23
	50A	3	5	9	10
	60B	4	5	9	10
V22	50A	1	8	2	46
	50A	2	8	2	46
	60B	3	5	20	10
V101	50A	1	8	2	46
	50A	2	8	2	46
	60B	3	5	20	14
V102	50A	1	8	2	28
	50A	2	8	2	28
	60B	3	5	14	14
V103	50A	1	8	2	13
	50A	2	8	2	13
	60B	3	5	3	8
V104	50A	1	8	2	14
	50A	2	8	2	14
	60B	3	5	3	8
V105	50A	1	8	2	23
	50A	2	8	2	23
	60B	3	5	11	4
V106	50A	1	8	2	20
	50A	2	8	2	20
	50A	3	5	7	10
	60B	4	5	7	10

50A	12.5	12	1
Peso Total	60B	=	92 kg
Peso Total	50A	=	214 kg

[illegible]